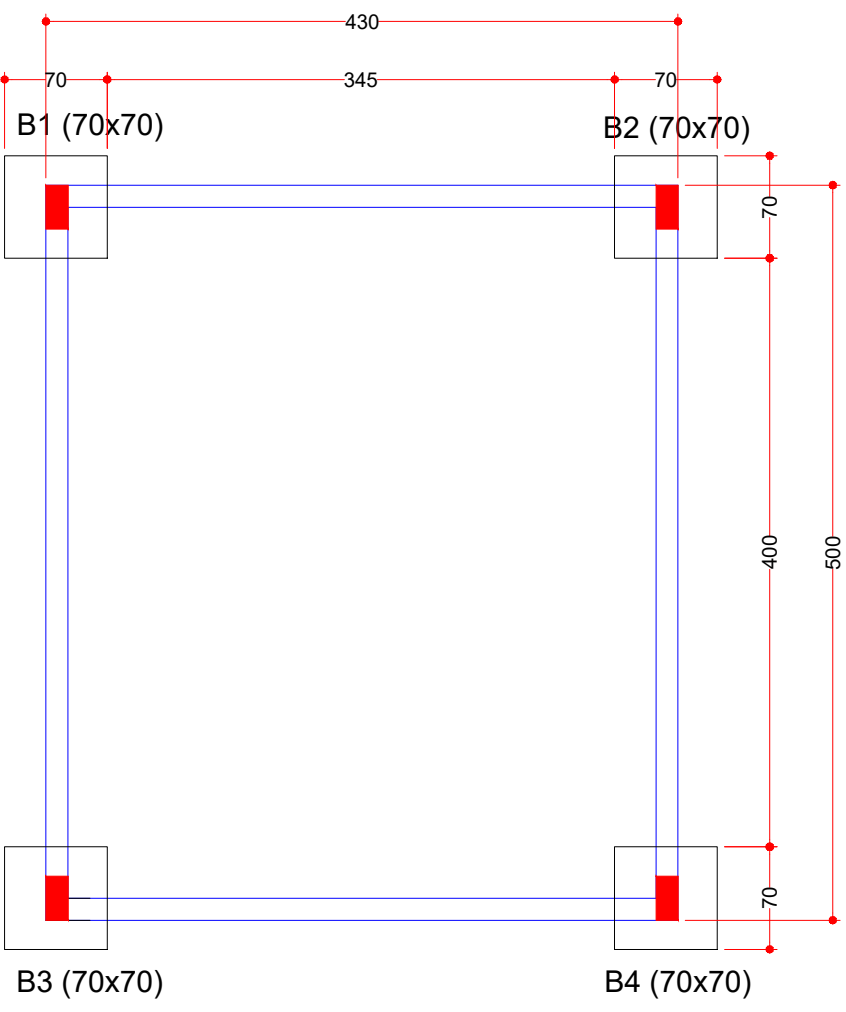
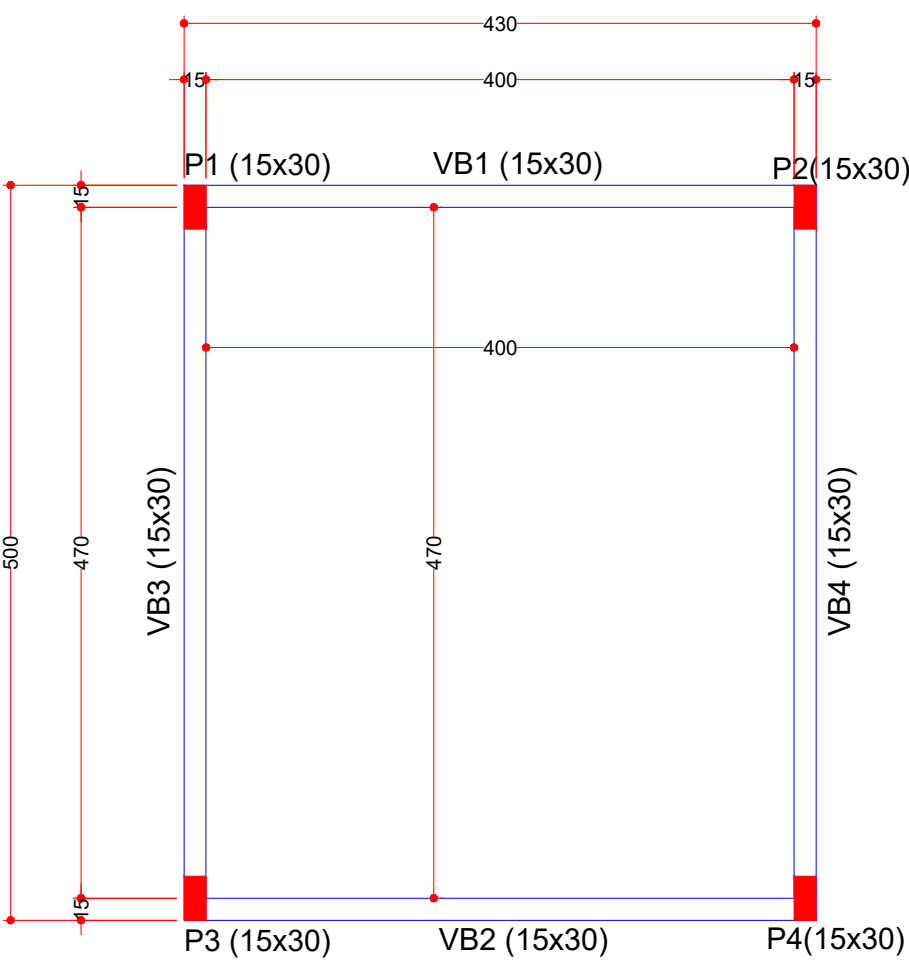


ABRIGO NARRADOR



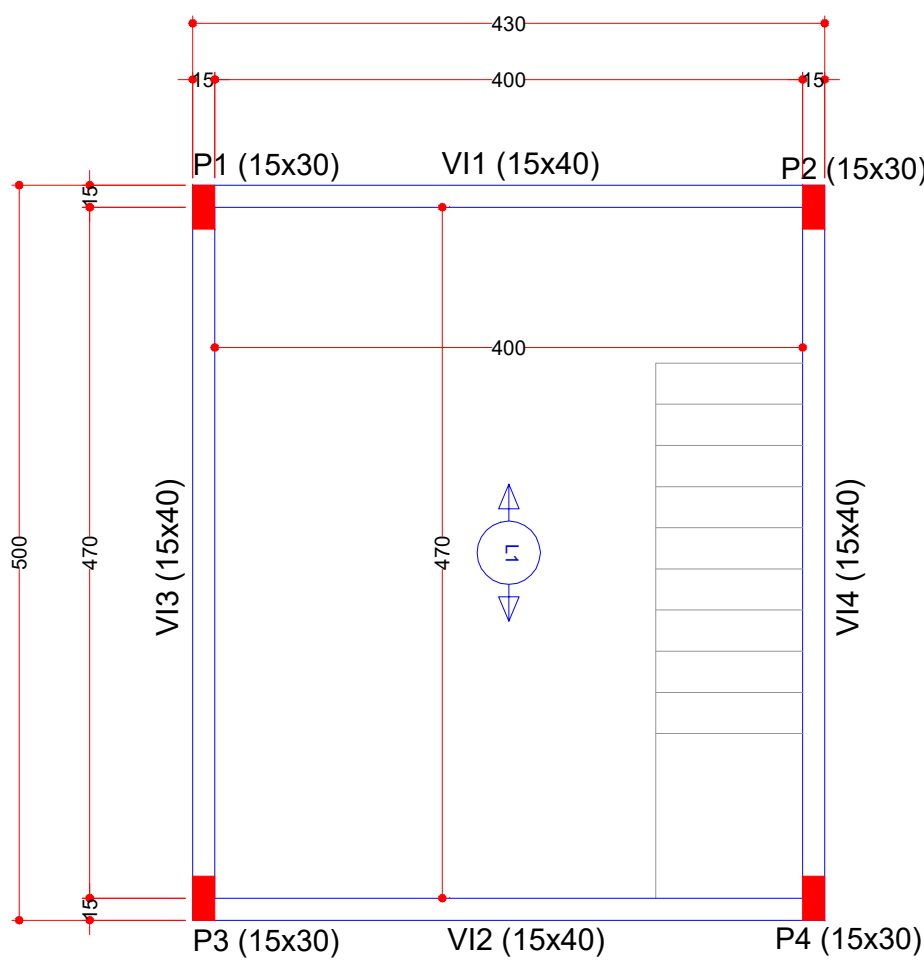
FUNDAÇÕES

ESCALA:1:50



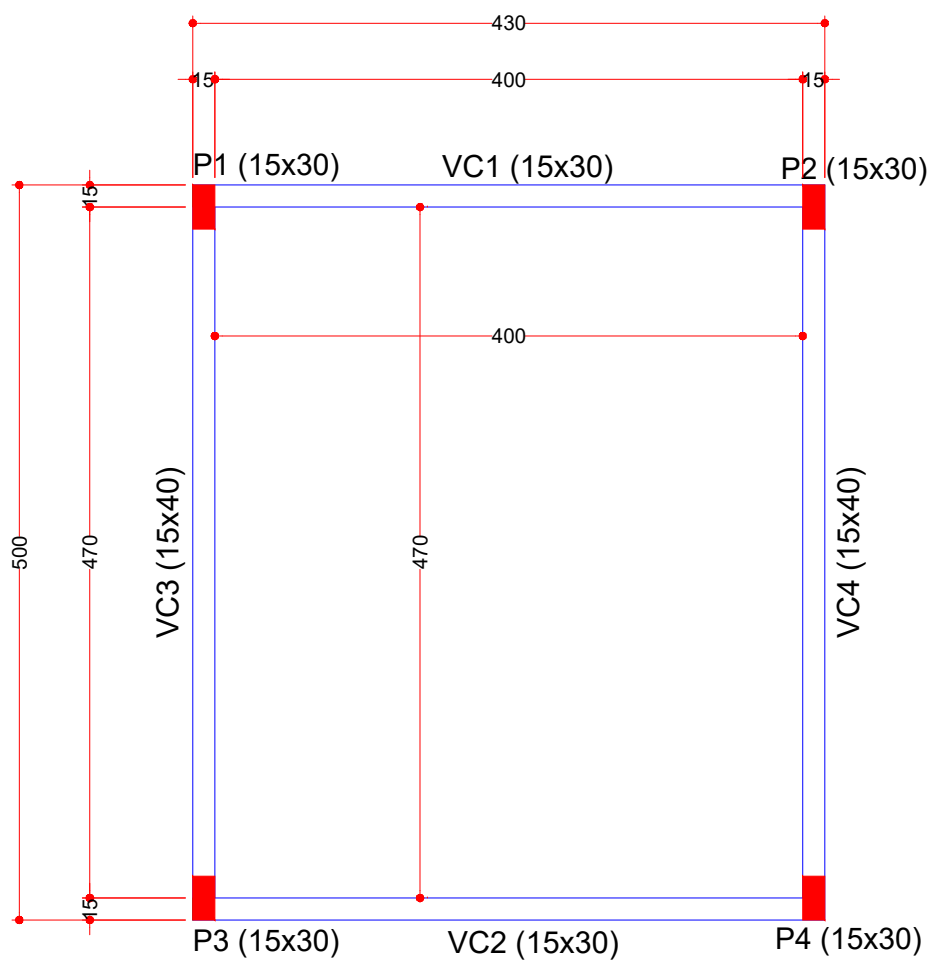
VIGA BALDRAME

ESCALA:1:50



VIGAS E LAJE INTERMEDIÁRIA

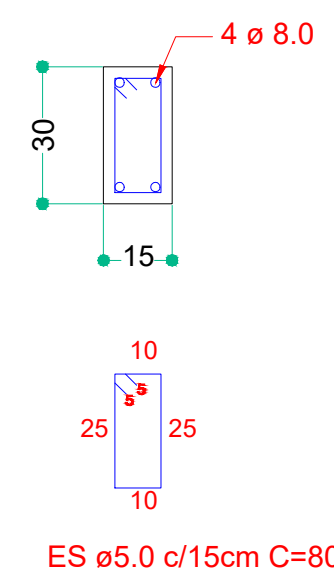
ESCALA:1:50



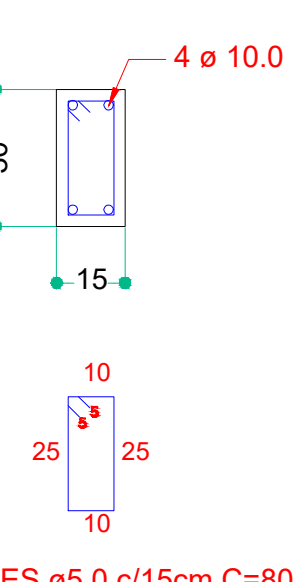
VIGAS COBERTURA

ESCALA:1:50

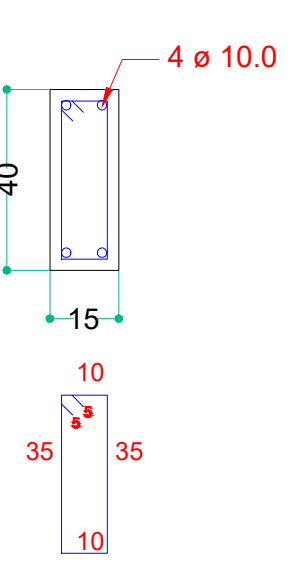
VIGAS BALDRAME
15x30 cm
escala 1:25



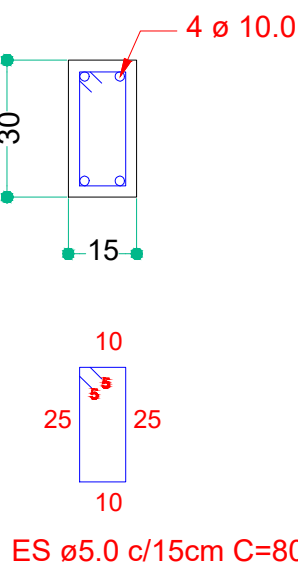
VIGAS INTERMEDIÁRIAS
15x30 cm
escala 1:25



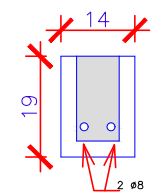
VIGAS INTERMEDIÁRIAS
15x40 cm
escala 1:25



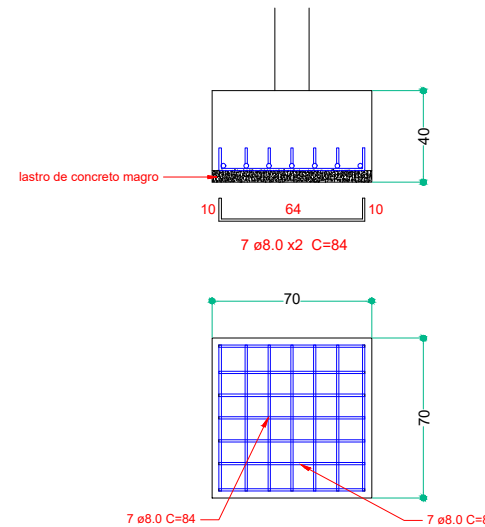
VIGAS COBERTURA
15x30 cm
escala 1:25



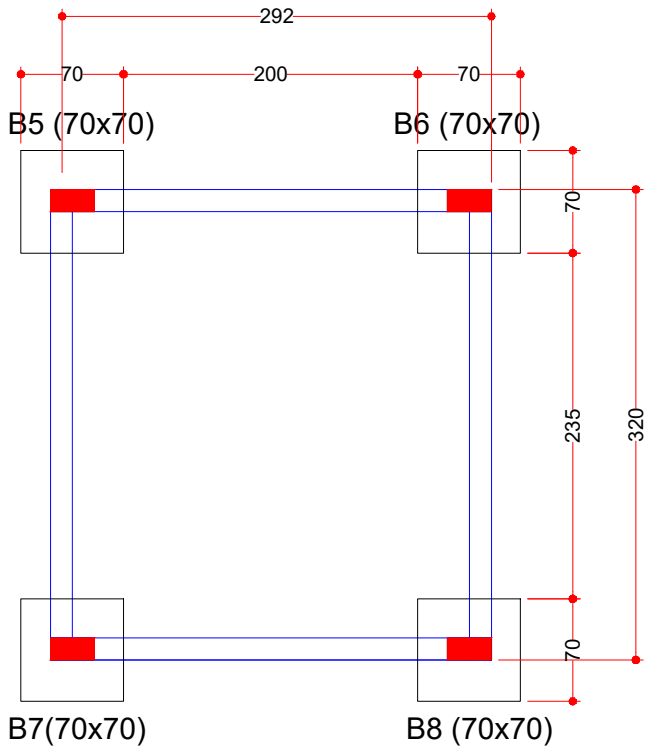
VIGAS CINTA (bloco canaleta)
14x19
escala 1:25



BLOCOS DE FUNDAÇÃO x20
Escala 1:25

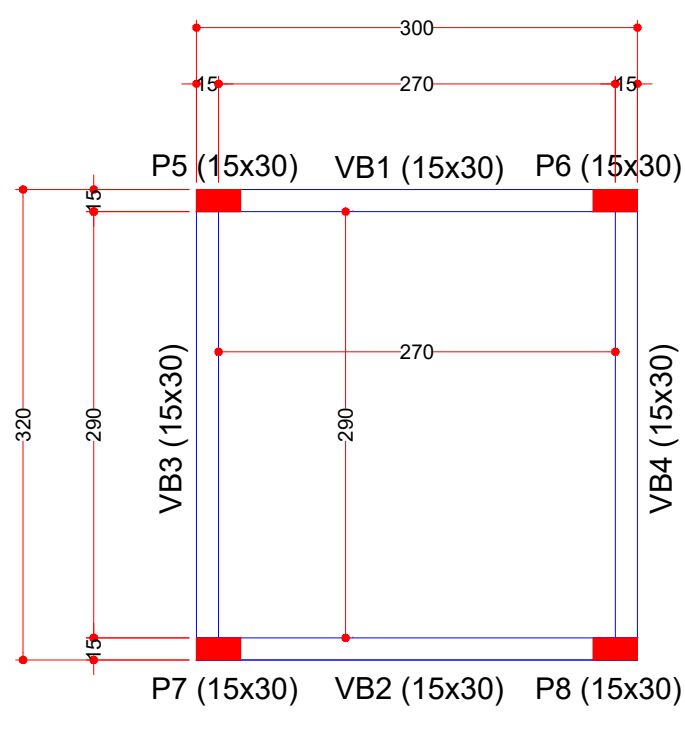


ABRIGO FILMAGEM



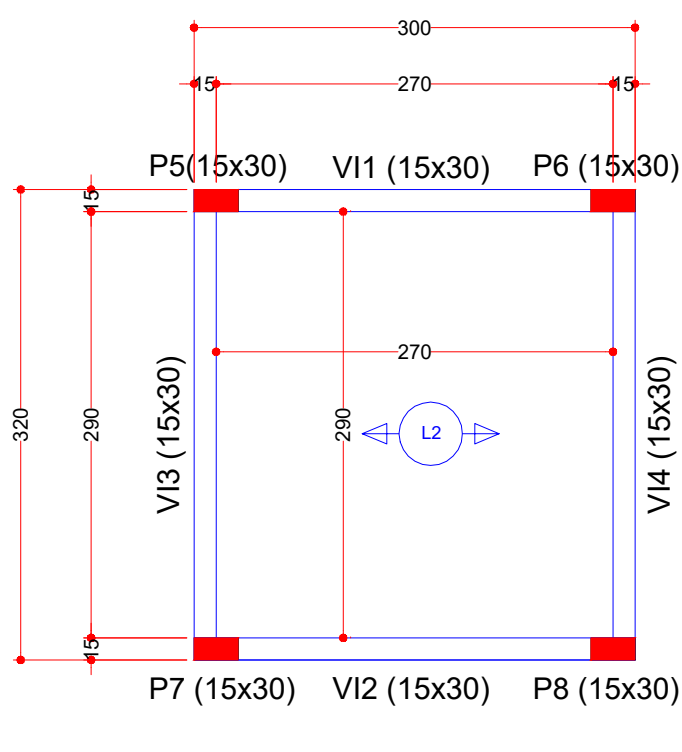
FUNDAÇÕES

ESCALA:1:50



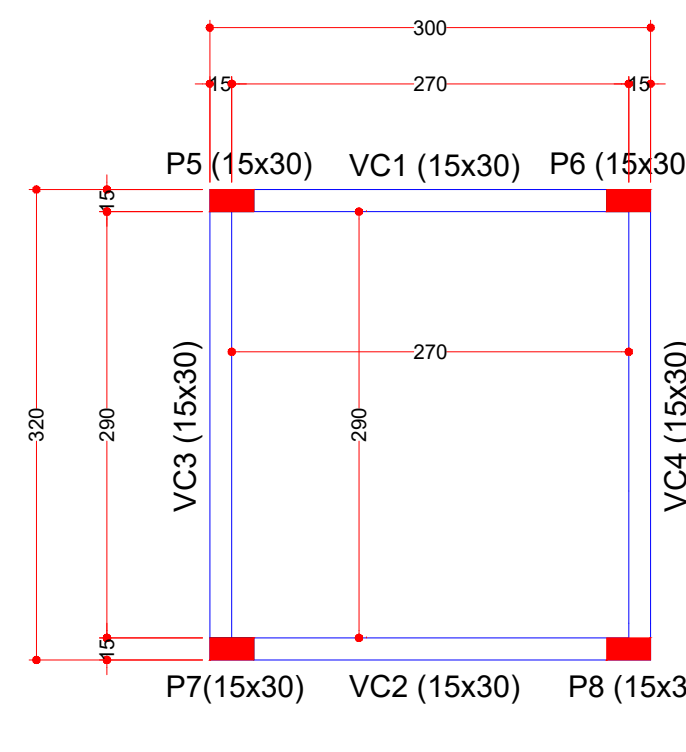
VIGAS BALDRAME

ESCALA:1:50



VIGAS E LAJE INTERMEDIÁRIA

ESCALA:1:50



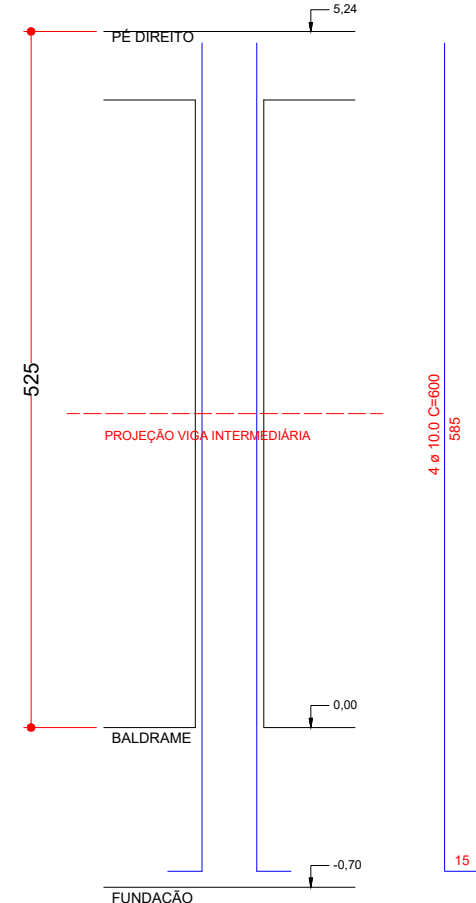
VIGAS COBERTURA

ESCALA:1:50

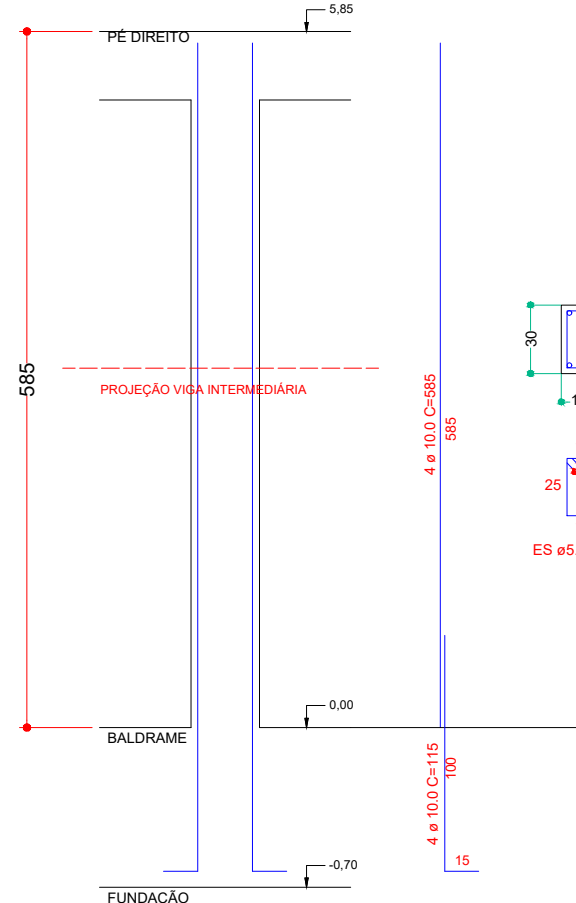
PILARES

Escala 1:25

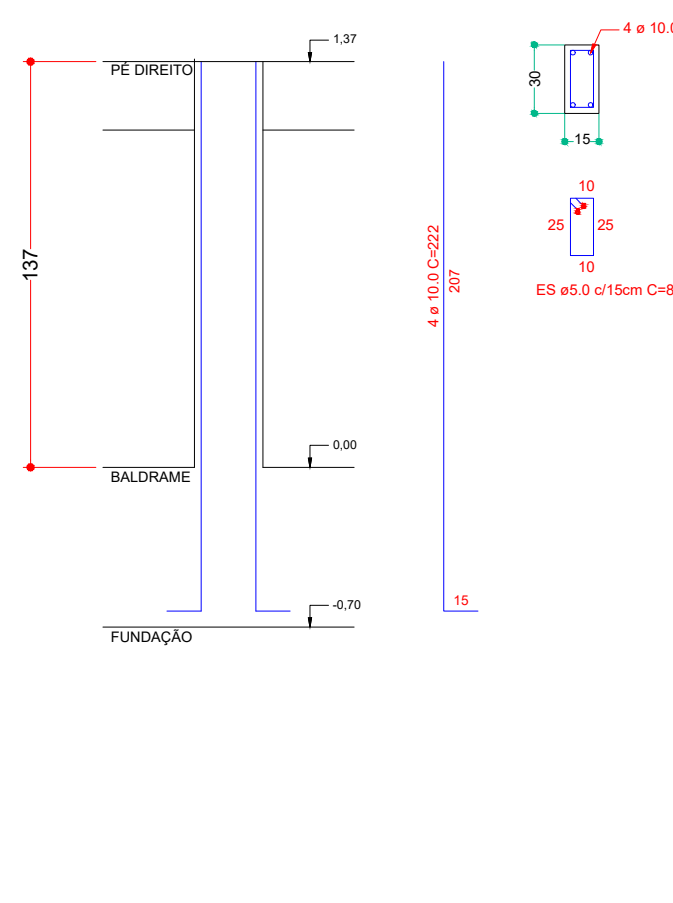
P1=P2=P3=P4



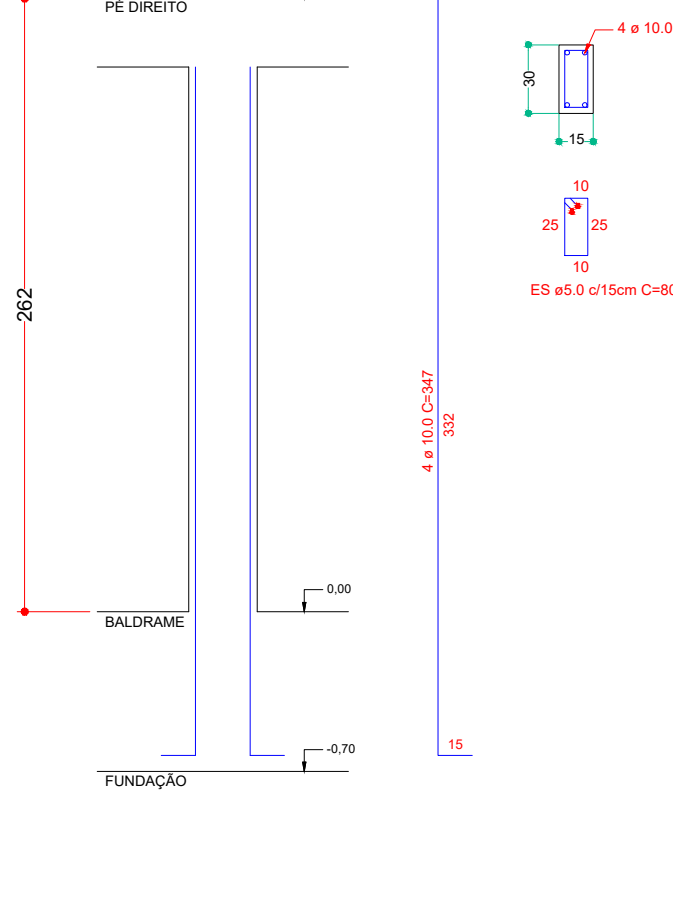
P5=P6=P7=P8



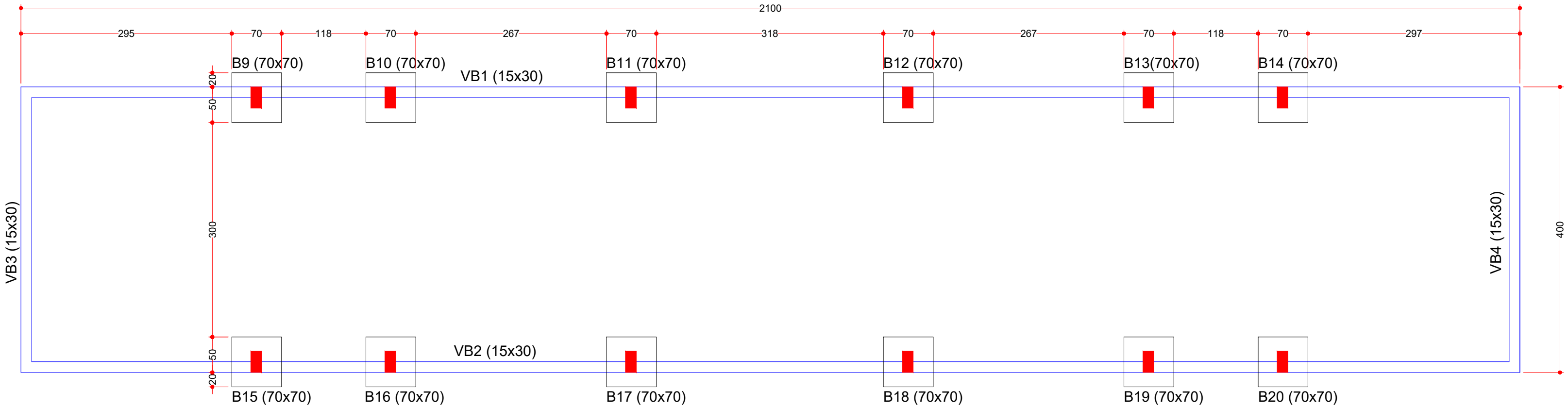
P9=P10=P13=P14=P15=P16=P19=P20



P11=P12=P17=P18

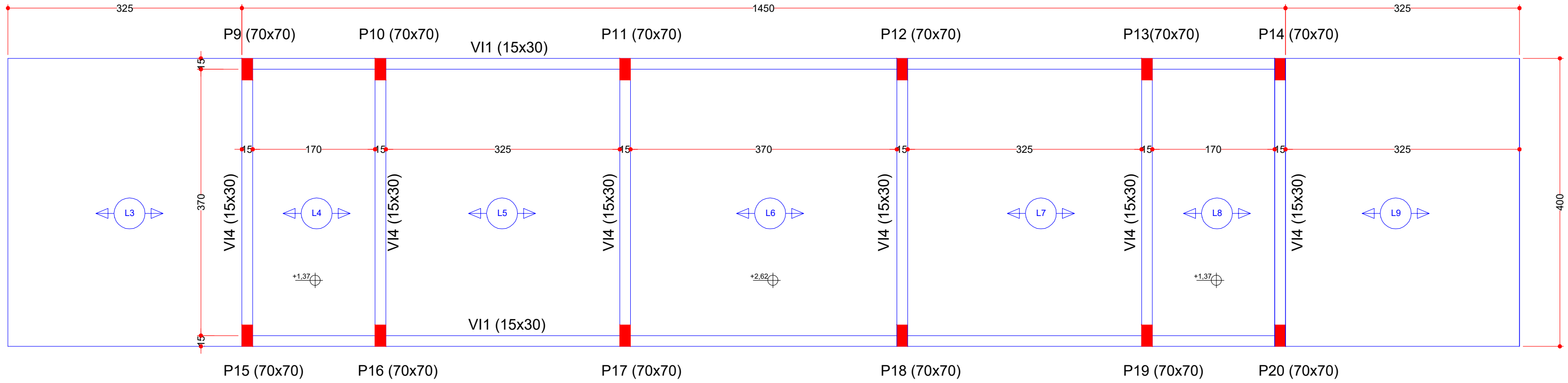


RAMPA DOS CAVALEIROS



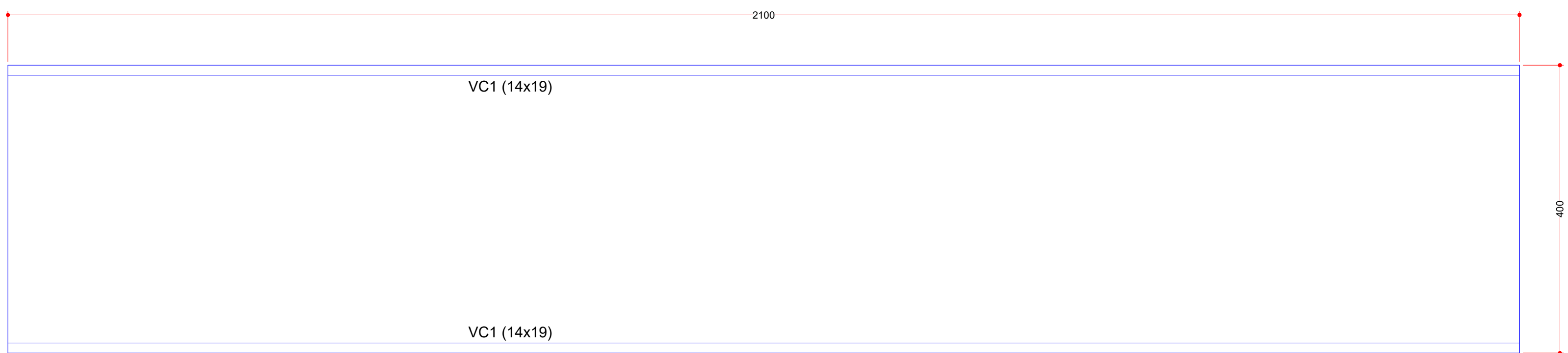
FUNDAÇÕES / VIGA BALDRAME

ESCALA:1:50



VIGAS INTERMEDIÁRIAS E LAJE

ESCALA:1:50



CINTA DE AMARRAÇÃO

ESCALA:1:50

RESUMO DOS MATERIAIS - RAMPA DOS CAVALEIROS

BLOCOS	BALDRAME	PILARES	VIGA INTERMEDIÁRIA	LAJES	CINTA DE AMARRAÇÃO
RESUMOS DOS MATERIAIS 1 - CONCRETO 25mpa: 2,36m³ 2 - AÇO CA-50 a) Ø 8.0mm: 56.17kg b) Ø 10.0mm: 40.29kg c) Ø 12.0mm: 18.57kg	RESUMOS DOS MATERIAIS 1 - CONCRETO 25mpa: 2,23m³ 2 - AÇO CA-50 a) Ø 8.0mm: 76.73kg b) Ø 10.0mm: 40.29kg c) Ø 12.0mm: 18.57kg 3 - FORMA: 25.56m²	RESUMOS DOS MATERIAIS 1 - CONCRETO 25mpa: 0.87m³ 2 - AÇO CA-50 a) Ø 8.0mm: 16.37kg b) Ø 10.0mm: 12.78kg c) Ø 12.0mm: 6.44kg 3 - FORMA: 16.89m²	RESUMOS DOS MATERIAIS 1 - CONCRETO 25mpa: 2,30m³ 2 - AÇO CA-50 a) Ø 8.0mm: 127.85kg b) Ø 10.0mm: 44.29kg c) Ø 12.0mm: 21.13kg 3 - FORMA: 42.52m²	RESUMOS DOS MATERIAIS 1 - Fôrma: 15.16m²	RESUMOS DOS MATERIAIS 1 - Bloco canaleta: 42.00 metros 2 - AÇO CA-50 a) Ø 8.0mm: 33.18kg b) Ø 10.0mm: 25.29kg c) Ø 12.0mm: 12.64kg

RESUMO DOS MATERIAIS - ABRIGO NARRADOR

BLOCOS	BALDRAME	PILARES	VIGA INTERMEDIÁRIA	LAJES	VIGA COBERTURA
RESUMOS DOS MATERIAIS 1 - CONCRETO 25mpa: 0.78m³ 2 - AÇO CA-50 a) Ø 8.0mm: 18.72kg b) Ø 10.0mm: 13.53kg c) Ø 12.0mm: 6.76kg	RESUMOS DOS MATERIAIS 1 - CONCRETO 25mpa: 0.81m³ 2 - AÇO CA-50 a) Ø 8.0mm: 18.72kg b) Ø 10.0mm: 13.53kg c) Ø 12.0mm: 6.76kg 3 - FORMA: 10.89m²	RESUMOS DOS MATERIAIS 1 - CONCRETO 25mpa: 0.54m³ 2 - AÇO CA-50 a) Ø 8.0mm: 16.37kg b) Ø 10.0mm: 12.78kg c) Ø 12.0mm: 6.44kg 3 - FORMA: 16.89m²	RESUMOS DOS MATERIAIS 1 - CONCRETO 25mpa: 1.09m³ 2 - AÇO CA-50 a) Ø 8.0mm: 21.13kg b) Ø 10.0mm: 15.43kg c) Ø 12.0mm: 7.71kg 3 - FORMA: 17.71m²	RESUMOS DOS MATERIAIS 1 - Fôrma: 15.16m²	RESUMOS DOS MATERIAIS 1 - CONCRETO 25mpa: 0.53m³ 2 - AÇO CA-50 a) Ø 8.0mm: 16.37kg b) Ø 10.0mm: 12.78kg c) Ø 12.0mm: 6.44kg 3 - FORMA: 16.89m²

RESUMO DOS MATERIAIS - ABRIGO DE FILMAGEM

BLOCOS	BALDRAME	PILARES	VIGA INTERMEDIÁRIA	LAJES	VIGA COBERTURA
RESUMOS DOS MATERIAIS 1 - CONCRETO 25mpa: 0.78m³ 2 - AÇO CA-50 a) Ø 8.0mm: 18.72kg b) Ø 10.0mm: 13.53kg c) Ø 12.0mm: 6.76kg	RESUMOS DOS MATERIAIS 1 - CONCRETO 25mpa: 0.53m³ 2 - AÇO CA-50 a) Ø 8.0mm: 16.37kg b) Ø 10.0mm: 12.78kg c) Ø 12.0mm: 6.44kg 3 - FORMA: 10.89m²	RESUMOS DOS MATERIAIS 1 - CONCRETO 25mpa: 0.89m³ 2 - AÇO CA-50 a) Ø 8.0mm: 21.13kg b) Ø 10.0mm: 15.43kg c) Ø 12.0mm: 7.71kg 3 - FORMA: 17.71m²	RESUMOS DOS MATERIAIS 1 - CONCRETO 25mpa: 0.53m³ 2 - AÇO CA-50 a) Ø 8.0mm: 16.37kg b) Ø 10.0mm: 12.78kg c) Ø 12.0mm: 6.44kg 3 - FORMA: 16.89m²	RESUMOS DOS MATERIAIS 1 - Fôrma: 15.16m²	RESUMOS DOS MATERIAIS 1 - CONCRETO 25mpa: 0.53m³ 2 - AÇO CA-50 a) Ø 8.0mm: 16.37kg b) Ø 10.0mm: 12.78kg c) Ø 12.0mm: 6.44kg 3 - FORMA: 16.89m²

CONSTRUÇÃO DE PISTA DE LAÇO COBERTA

DETALHE CASA NARRADOR / RAMPA / FILMAGEM

RODOVIA BR 158, CENTRO DE EVENTOS - MARQUINHO PARANÁ

PROPRIETÁRIO

MUNICÍPIO DE MARQUINHO
ELIO BOLZON JUNIOR
PREFEITO MUNICIPAL

RESPONSÁVEL TÉCNICO

Charles Alexandre Batista
Engenheiro Civil
CREA 135.810/0

ESTRUTURAL

ESCALAS

Indicadas

03/03

Marquinhos, 25 de fevereiro de 2025.